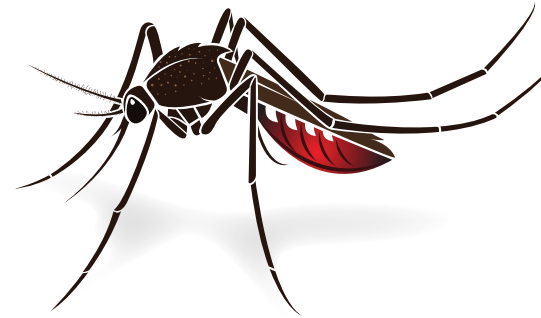




MOSQUITOES

WHAT IS A MOSQUITO?

A mosquito is a small, two-winged flying insect that lives in most parts of the world. Almost 3,500 types of mosquitoes can be found worldwide. Not all mosquitoes bite. When they do, the most common reaction is swelling and itching. Mosquitoes can carry vectors. A vector is an animal, insect, or tick that spreads germs to people and animals.



WHAT ATTRACTS MOSQUITOES?

Carbon dioxide gives insects the signal that blood is nearby - and since humans exhale CO₂ - we make it easy for these pests to find us.

ARE MOSQUITOES DANGEROUS?

Surprisingly, mosquitoes are the deadliest insect on earth. They can carry deadly diseases. In fact, more deaths have been reported as a result of a mosquito bite. They bite with a proboscis instead of teeth. Most bites are just irritating and itchy. Female mosquitoes feed on the blood from mammals and humans. Males prefer flower nectar as their primary food source.

WHERE DO THEY LIVE?

Mosquitoes can live inside or outside - wherever it's comfortable. They gather around artificial or natural water containers that are close to where humans live and most egg production sites are found close to homes. Residential shady areas are popular for mosquitoes, as well as crowns of trees, sewer/storm drains, and thick bushes.





MOSQUITOES

WHERE DO THEY REPRODUCE?

Mosquitoes need standing water to breed (it only takes a few millimeters). If your yard is free of standing water it doesn't mean your neighbor's yard is too. There are many different places where water can be stored (bird baths, cars, children's toys, flower pots, garbage bags left out in the rain, garden hoses, gutters and downspouts, old tires, rain gauges, leaves and debris).

IS MOSQUITO CONTROL SAFE?

Spraying for mosquitoes by a professional is usually not harmful because mosquito control products are applied at a low (and controlled) dose and must be used according to the label. Residents should not attempt to spray insects as pesticides can be harmful to the user and the environment when applied incorrectly.

